



# FACT SHEET

The following nutrient information for our product is based on the certified portion size as stated on CN Label.

PROCESSOR NAME: Pilgrim's Pride Corp. - Gold Kist Farms Brand

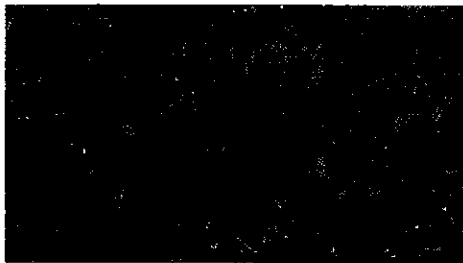
PRODUCT NAME: CN WG Breaded Dark Meat Smackers

CODE NUMBER: 110458 Case Wt: 30# Donated Food/Case: 40.541 Standard Yield: 74%

SERVING SIZE: 4.3 oz Servings/Case 108 Contribution: 2 MMA Serving 1 Grain Serving\*

\*Calculation for grains based on 16 grams creditable per ounce.

UPC #: 75632104587 Gross Cs Wt: 31.95 Case Dim: 17.1Lx13.1x12.6H Cube: 1.63 Pallet: Tl 8 Hi 6 Cs/Pallet:48 Shelf Life 365 days



## BID DESCRIPTIONS

Whole Grain breaded fully cooked CN labeled popcorn chicken produced from USDA 100103 dark meat commodity chicken. No added soy protein. Popcorn to be batter breaded with Whole Grain and enriched wheat flour breader. 10 popcorn pieces @ 0.43 oz each guaranteed by CN label to provide 2 ounces meat/meat alternative and 1 grain servings. Product to provide zero grams trans fats.

## NUTRIENT INFORMATION

\*Percent daily values based on a 2000 calorie diet.

### Basic Components

Calories (kcal)	240	Carbohydrates (g)	16
Fat (g)	11	Dietary Fiber (g)	3
Saturated Fat (g)	2	Total Sugars (g)	0
Trans Fatty Acid (g)	0	Protein (g)	18
Cholesterol (mg)	80	Whole Grains (g)	8

### Vitamins\*

Vitamin A	2%
Vitamin C	0%

### Minerals\*

Sodium (mg)	570
Calcium	2%
Iron	8%

*Camden Robbins* R.D., SNS

Camden Robbins, R.D., SNS K-12 School Nutritionist

12/3/18

Date

Primary Plant Production -Waco, TX CN #089664 Additional CN #089661, CN#089662, CN#089663

# 110458

Fully Cooked

## Whole Grain Large Popcorn Style Dark Chicken

### Breaded Popcorn Shaped Dark Chicken Patty

**INGREDIENTS:** Dark Chicken, Water, Modified Food Starch, Reduced Sodium Sea Salt (Sea Salt, Potassium Chloride, Rice Flour), Sodium Phosphates, Breaded With: Whole Wheat Flour, Salt, Enriched Wheat Flour (Enriched With Niacin, Reduced Iron, Thiamine Mononitrate, Riboflavin, Folic Acid), Disodium Inosinate And Disodium Guanylate, Onion Powder, Spice, Yeast, Garlic Powder, Maltodextrin, Sugar, Soy Sauce (Fermented Soybeans, Wheat, Salt), Extractives Of Paprika, Yeast Extract. Batter/With: Water, Whole Wheat Flour, Modified Corn Starch, Salt, Onion Powder, Garlic Powder, Nonfat Milk, Whey, Disodium Inosinate And Disodium Guanylate. Pre dusted With: Whole Wheat Flour, Modified Corn Starch, Salt, Spice Extractive. Breading Set In Vegetable Oil.

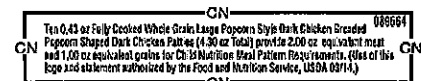
**CONTAINS: MILK SOY AND WHEAT**

Distributed By: Pilgrim's Pride Corporation  
1770 Promontory Circle, Greeley, CO 80634 800-321-1470 www.poultry.com  
Gold Kist Farms is a registered trademark of Pilgrim's Pride Corporation  
Product of USA



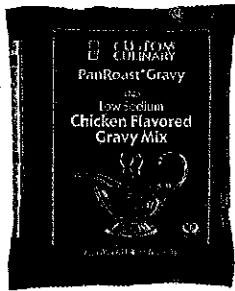
"Copy not for documenting  
Federal Meal Requirements"

**HEATING INSTRUCTIONS FROM FROZEN:** Conventional Oven for 10-12 minutes at 350°F;  
Convection Oven for 6-8 minutes at 350°F. Appliances vary, adjust cook times accordingly.



(01)1 00 75632 10458 4





## Custom Culinary® PanRoast® Low Sodium Chicken Flavored Gravy Mix

Formula No. 1740

This superior quality mix offers rich, savory and well-balanced, true pan roasted chicken flavors and authentic aromas. The gold colored gravy is an excellent complement to center-of-the-plate entrées and an ideal partner to carefully prepared side dishes. Also use this versatile gravy as the creative foundation for soups and stews.



1740 Size

Quantity

1740YCPAN 1 / 12 OZ

1

\$8.61

### Preparation

Pour one gallon of warm water (100°F/38°C) into a saucepan. Gradually add one full bag (12 ounces) of mix to warm water, whisking thoroughly. Bring to a boil (212°F/100°C), stirring frequently. Reduce heat and simmer 3-5 minutes. Serve immediately or hold on steam table at 160° - 175°F/ 71° - 79°C. For Half Bag: In saucepan, gradually add 6 ounces of mix to 1/2 gallon of warm water (100°F/38°C), whisking thoroughly. Continue with directions above.

### Ingredients

Food Starch - Modified, Rice Flour, Whey, Hydrolyzed Corn Protein, Rendered Chicken Fat, Sugar, Corn Syrup Solids, Onion Powder, With 2% Or Less Of Coconut Oil, Xanthan Gum, Anti-Caking Agent (Silicon Dioxide), Dehydrated Chicken Broth, Yeast Extract, Potassium Chloride, Sodium Caseinate, Dipotassium Phosphate, Mono & Diglycerides, Extractive Of Annatto (Color), Extractive Of Turmeric (Color).

### Package Info

Store in tight containers in cool 50F to 80F dry areas. 15 months for maximum flavor.

**WANT  
RECIPES  
FEATURING  
THIS  
PRODUCT?**

[CLICK HERE](#)

### Nutrition Facts

Serving size 2 FL. OZ. (5g)  
Servings Per Container 68

Amount Per Serving

**Calories 20**

% Daily Value\*

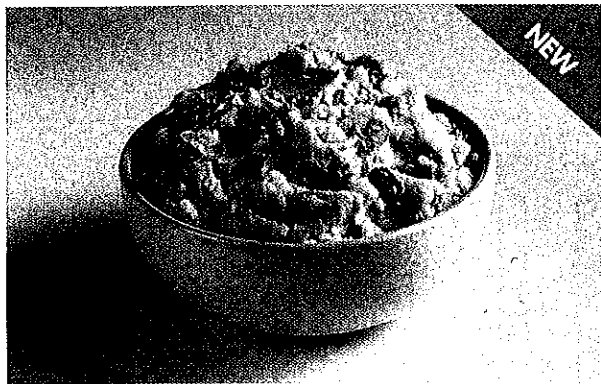
<b>Total Fat 0.5g</b>	<b>1 %</b>
Saturated Fat 0g	<b>1 %</b>
Trans Fat 0g	
<b>Cholesterol 0mg</b>	<b>0 %</b>
<b>Sodium 140mg</b>	<b>6 %</b>
<b>Total Carbohydrates 3g</b>	<b>1 %</b>
Dietary Fiber 0g	<b>0 %</b>
Sugars 1g	
Includes 0g Added Sugars	<b>0 %</b>

**Protein 0g**

Vitamin D 0mcg 0 %	Calcium 7mg 0 %
Iron 0mg 0 %	Potas. 40mg 0 %
Vitamin A 0 %	Vitamin C 0 %

The % Daily Value (DV) tells you how much a nutrient in a serving of food contributes to a daily diet. 2,000 calories a day is used for general nutrition advice.

*Secondary*



Item #M0155

## Butter Mashed

Brand: Lamb's Supreme®

Cut Size: N/A

Package Size: 6/4#

These simple recipe, skin-on white flesh mashed potatoes are made with just three simple ingredients - premium potatoes, butter and sea salt. Whipped to an irresistibly creamy smoothness, our new simple recipe mashed potatoes are simply delicious.

### Ingredients

Potatoes, Butter (Pasteurized Cream, Salt), Sea Salt. CONTAINS: MILK

Allergens: Milk

Grade: A (FANCY OTHER - REGULAR)

Kosher: Yes

Country of Origin: USA

Shelf Life: 720 days

SCC Code: 10044979221629

Item Number: M0155

### NUTRITION

Serving Size: 2/3 cup (140g) *4.9 oz*  
 Servings per container: About 78  
 Calories [per serving]: 130.0  
 Calories from fat: 50.0

\* Percent Daily Values are based on a 2,000 calorie diet. Your daily values may be higher or lower depending on your calorie needs.

\*\*Contains less than 2% of the Daily Value of these nutrients.

\*\*\*Calories per gram: Fat: 9; Carbohydrate: 4; Protein 4;

### Amount Per Serving

		DV%
Total Fat	5.0g	8.0%
Saturated Fat	2.5g	13.0%
Trans Fat	0	
Cholesterol	5.0mg	2.0%
Sodium	420.0mg	18.0%
Potassium	250.0mg	7.0%
Total Carbohydrate	18.0g	6.0%
Dietary Fiber	9.0g	36.0%
Sugars	less than 1g	
Protein	2.0g	
Vitamin A		0%
Vitamin C		0%
Calcium		2%
Iron		2%

### COOKING METHODS

Method	Time	Temperature	Additional Instructions
Boil in Bag	20 - 26 min		
Microwave Oven	20 - 24 min	Med-High	
Steamer	24 - 28 min		

### SHIPPING & STORAGE

Shipping Information		Product Information	
Net Weight	24.0000 <i>1 lb</i>	Grade	A (FANCY OTHER - REGULAR)
Gross Weight	26.0000	Country of Origin	USA
Count Per Pound	N/A	Kosher Status	Yes
Case Cube	0.63	Shelf Life	720 days
TI/HI	14,6		

### Handling Instructions

Do not drop. Handle like eggs. Perishable, keep frozen. Store at 0°F or colder.



Elementary

## REAL Mashed Potatoes with Vitamin C



### Nutrition Facts

Serving Size: 1/4 cup dry (23g)

#### Amount Per Serving

Calories	80
Calories from fat	10
	<b>% Daily Value*</b>
Total Fat 1g*	1%
Saturated Fat 0g	0%
Trans Fat 0g	
Cholesterol 0mg	0%
Sodium 310mg	13%
Potassium 240mg	7%
Total Carbohydrates 17g	6%
Dietary Fiber 1g	6%
Sugars 1g	
Protein 2g	
Vitamin A	0%
Vitamin C	50%
Calcium	2%
Iron	2%

\*Percent Daily Values are based on a 2,000 calorie diet. Your daily values may be higher or lower depending on your calorie needs.

### Product Description

Hearty flavor. Velvety texture. Made from real 100% Idaho® potatoes. Idahoan Mashed Potatoes with Vitamin C come right from the people that grew them. If you're a foodservice pro, go right to the source. These no-mess, no-fuss solutions give you the yields, profits, and satisfied customers you're looking for!

Idahoan REAL Mashed Potatoes with Vitamin C are processed from sound, well peeled and trimmed 100% Idaho® Potatoes. The product complies with the provisions of the Federal Food, Drug and Cosmetic Act and Amendments.

### Size

26 oz pouch

### SKU

SKU# 29700 22313

### Ingredients

Idaho® potatoes, salt, partially hydrogenated oil (contains one or more of the following: soybean, cottonseed, sunflower), nonfat milk, monoglycerides, calcium stearoyl lactylate, spice, artificial color, natural and artificial flavor, sodium acid pyrophosphate (preserves freshness), vitamin c, sodium bisulfite (preserves freshness), citric acid (preserves freshness) and mixed tocopherols (preserves freshness).

### Preparation Instruction

1. Measure into 6" x 1/2 size steam table pan 1 gallon (3.78 L) boiling water.
2. Add one pouch of potatoes all at once, using spoon or wire whip to distribute evenly and wet all potatoes. Let stand one minute, then fluff with utensil.
3. Place on steam table and serve.

For a creamier mashed potato add more boiling water.

### Yields

Idahoan REAL Mashed Potatoes refresh at a 2 to 1 ratio (ie; 2 parts water, 1 part Idahoan REAL Mashed Potatoes)

Servings	Boiling Water	Potatoes	Steam Table Pan Size
4 - 2/3 cup	2 cups	1 cup	-
8 - 2/3 cup	4 cups	2 cups	-
52 - #10 Scoop <sup>3/8</sup>	1 Gallon	1 pouch	6" Half Pan
104 - #10 Scoop	2 Gallons	2 pouches	6" Full Pan

### Shelf Life & Storage

The shelf life is approximately 12 months from date of packaging code (imprinted on the package), when stored away from direct heat, in a cool, dry location, away from strong contaminating odors. Storage conditions should not exceed 80°F and 60% R.H.

### Allergens

Milk

Soy

### Certifications

Kosher Dairy

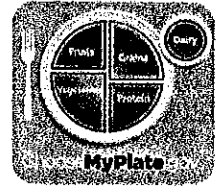
# USDA Foods Product Information Sheet

For Child Nutrition Programs



**100313— Corn, Whole Kernel, No Salt Added, Canned**

**Category: Vegetables**  
**Subgroup: Starchy**



## PRODUCT DESCRIPTION

This product is U.S. Grade B whole kernel corn that is canned with no added salt. This item is available in cases containing six #10 cans.

## CREDITING/YIELD

- One case yields about 119 ½ -cup servings of heated, drained corn.
- CN Crediting: ½ cup cooked corn credits as ½ cup starchy vegetable.

## CULINARY TIPS AND RECIPES

- Corn can be added to many foods such as soups, chili, casseroles, burritos, salads, or roasted with spices for a flavorful side dish.
- Prepare canned corn in a colorful salad with black beans and peppers for a healthy entrée or side dish.
- To find culinary techniques and many recipe ideas visit [NFSMI](#) or [Team Nutrition](#).

## FOOD SAFETY INFORMATION

- For more information on safe storage and cooking temperatures, and safe handling practices, please refer to: [Developing a School Food Safety Program Based on the Process Approach to HACCP Principles](#).

## NUTRITION FACTS

Serving size: 1/2 cup (82g) corn, canned, no salt added, drained

### Amount Per Serving

**Calories** 65

**Total Fat** 1g

Saturated Fat 0g

Trans Fat 0g

**Cholesterol** 0mg

**Sodium** 15mg

**Total Carbohydrate** 15g

Dietary Fiber 2g

Sugars 3g

**Protein** 2g

Source: [USDA National Nutrient Database](#)

**Allergen Information:** Please refer to allergen statement on the outside of the product package for vendor-specific information. For more information, please contact the product manufacturer.

Nutrient values in this section are from the USDA National Nutrient Database for Standard Reference or are representative values from USDA Foods vendor labels. Please refer to the product's Nutrition Facts label or ingredient list for product-specific information.



HOME > PRODUCTS > NATURAL > 4/ 5# YELLOW REDUCED FAT CHEDDAR FEATHER SHRED

4/ 5# Yellow Reduced Fat Cheddar Feather Shred

FULL NUTRITION FACTS

28g	Serving Size (g)
320	Servings Per Case
80	Calories per Serving
54	Calories from Fat
6g	Total Fat(g)
3g	Saturated Fat(g)
0g	Trans Fat(g)
20mg	Cholesterol (mg)
280mg	Sodium (mg)
1g	Total Carbs (g)
1g	Dietary Fiber (g)
0g	Sugars (g)
6g	Protein (g)
4%	Vitamin A
18%	Calcium
0%	Vitamin C
0%	Iron

The percent daily values are based on a 2,000 calorie diet, so your values may change depending on your calorie needs.

Ingredients: Reduced Fat Cheddar Cheese (Pasteurized Milk, Cultures, Salt, \*Modified Food Starch, \*Flavors, Nonfat Milk, \*Whey Protein Concentrate, Annatto, Vitamin A Palmitate, Enzymes), Powdered Cellulose (to prevent caking), Potassium Sorbate, Natamycin (preservative)

PRODUCT CODE	75571-1
UPC CODE	NOT PROVIDED
GTIN	NOT PROVIDED
CASE DIMENSION INCHES (LXWXH)	
16 11/16" X 10 1/8" X 10 7/16"	
CASE CUBE (CUBIC FEET)	1.029 CUBIC FEET
NET CASE WEIGHT LBS	20.00 LBS.
GROSS CASE WEIGHT LBS	21.75 LBS.
TIX HI	NOT PROVIDED
CASES/PALLET	70
SHELF LIFE (DAYS)	120 DAYS
REFRIGERATION	KEEP REFRIGERATED
STORAGE TEMP (UPPER AND LOWER LIMIT)	33-40 DEGREES
"CN MEAT EQUIV. (OZ)"	NOT PROVIDED